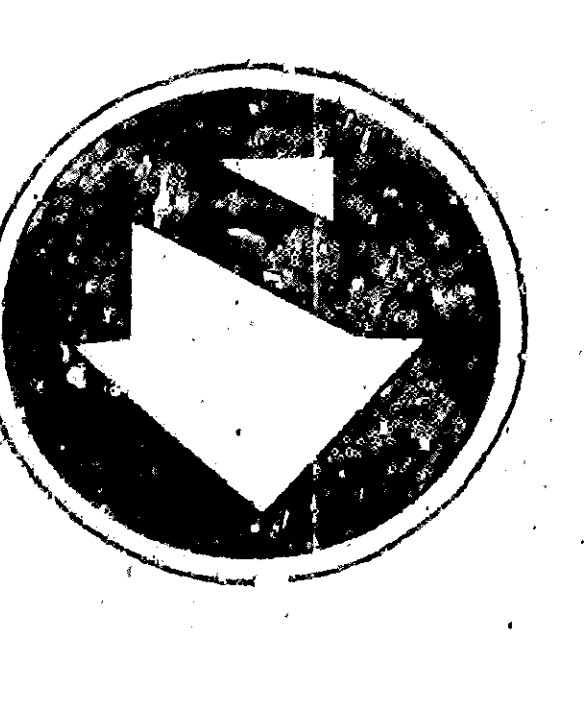
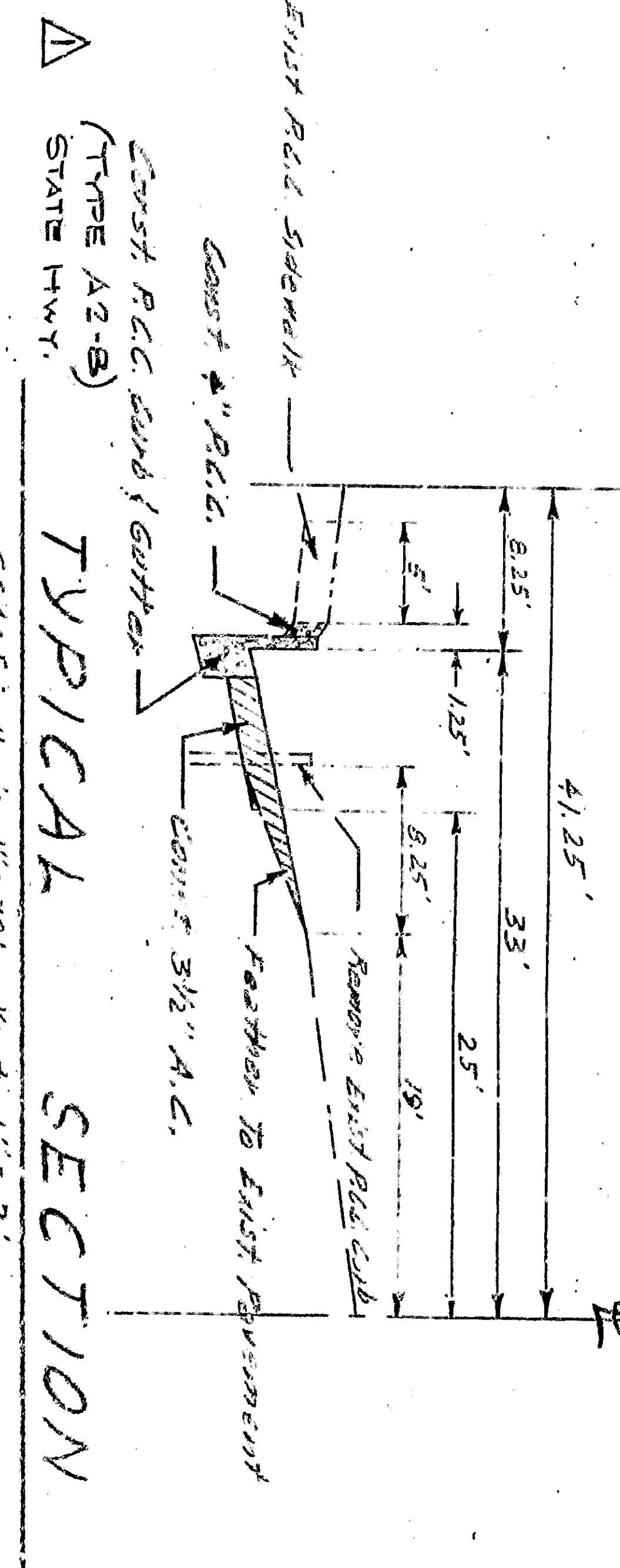


GENERAL NOTES

- All work embedded on these Plans shall be done in conformity with applicable provisions of Standard Specifications for Highway Construction, 1957 Edition, as amended, and the City of San Bernardino, California, Standard Specifications for Highway Construction, 1957 Edition, as amended.
- Street widening to 35' and Standard Paving to 36' shall be done in the office of the City Engineer.
- Existing curbs and gutters shall be removed and replaced as directed by the Engineer.
- Existing utility lines shall be located and marked as directed by the Engineer.
- All work shall conform with requirements as specified in California Division of Highways Standard Specifications, 1957 Edition, as amended.



PLAN
SCALE: 1" = 20'



TYPICAL SECTION
SCALE: 1/4" = 1'-0"

REV	DESCRIPTION	DATE
1	Changed Type of curb & added Note No. 5	1/15/58
2	Added Note No. 5	1/15/58
3	Added Note No. 5	1/15/58
4	Added Note No. 5	1/15/58
5	Added Note No. 5	1/15/58
6	Added Note No. 5	1/15/58
7	Added Note No. 5	1/15/58
8	Added Note No. 5	1/15/58
9	Added Note No. 5	1/15/58
10	Added Note No. 5	1/15/58
11	Added Note No. 5	1/15/58
12	Added Note No. 5	1/15/58
13	Added Note No. 5	1/15/58
14	Added Note No. 5	1/15/58
15	Added Note No. 5	1/15/58
16	Added Note No. 5	1/15/58
17	Added Note No. 5	1/15/58
18	Added Note No. 5	1/15/58
19	Added Note No. 5	1/15/58
20	Added Note No. 5	1/15/58

APPROVED: [Signature]
 CITY OF SAN BERNARDINO
 DEPARTMENT OF ENGINEERING
 IMP. PLAN "E" STREET
 BET. 35TH ST AND 36TH ST - WEST SIDE
 CURB & GUTTER AND PAVING
 SHEET 1 OF 1
 DRAWN BY: [Signature]
 CHECKED BY: [Signature]
 RECOMMENDED BY: [Signature]